

BOXING MATCH

DESIGN
GUIDE™



DESIGN BY:
MICHAEL STRONG

THE
SCRAPBOOK LOUNGE™





No bruises, broken bones, or black eyes

Mike is in a boxing match—the very best kind—a great paper crafting project and nobody gets any black eyes. He's come up with a couple of different uses for his 'matched boxes'— I wonder what uses you'll find for this cool card holder?



MATERIALS

TEMPLATE

- Boxing Match – 2 pages per box
- you'll need to make 2 boxes

TOOLS

- Scissors
- Craft Knife
- Ruler
- Cutting Mat
- 4 ½" diameter saucer

SUPPLIES

- Red Cardstock
- Four 8 ½" x 11" sheets
- Scrap to mat sign

- White Cardstock
- Two ¼" x 11" strips
- One 8 ½" x 11" sheet

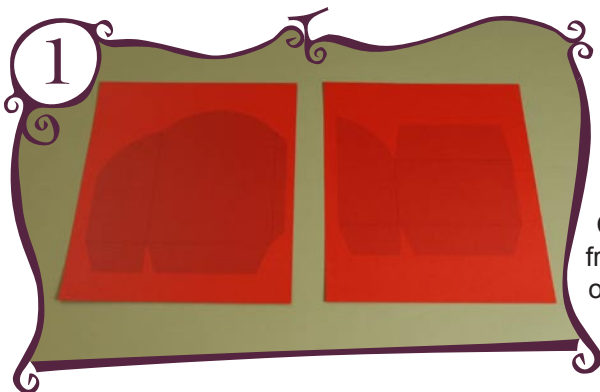
- Regular Tape
- Double-stick Tape
- Glue Stick
- Clear glue
- 26 tiny gold cabochons (about ⅛" diameter each)
- One 1 ½" diameter Styrofoam ball

FEATURED PRODUCTS

Marvy/Uchida:

- Puffy Velvet Fabric Markers
- white
- red
- Just Glitter Marker
- gold
- Le Pen Fine Tip Marker
- black
- Heat Tool

STARTING YOUR ELF MAILBOX



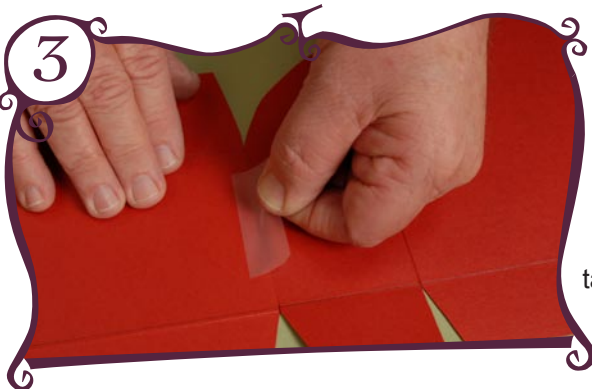
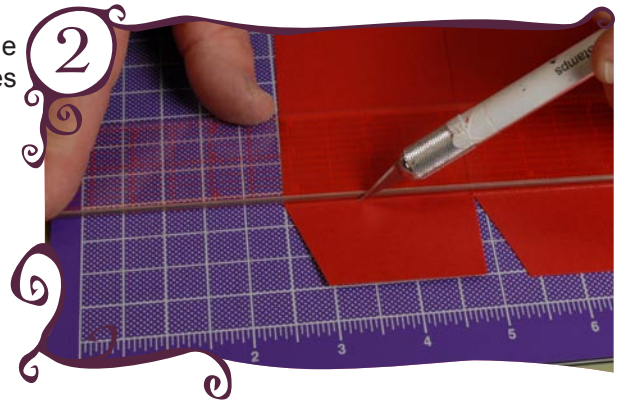
NOTE: The following instructions are for one box. To create the Elf Mailbox that Mike made in the Boxing Match Webisode you'll need to repeat Steps 1 - 8 for a second box.

Create the box. Download both pages of the Boxing Match Template from our website. This will make one box. Print out on red cardstock. Cut out both pieces of the box with scissors.



Mike used a very heavy cardstock. If your printer won't take heavy cardstock, print the Template pages out on red paper or lightweight cardstock and then adhere to heavier cardstock. Be sure to adhere a plain piece of red paper or cardstock to the backside too, so that your Elf Mailbox will be red inside and out when completed.

Place a cutting mat on your work surface. With a ruler and the backside of a craft knife, carefully score each line where indicated on both pieces of the box cut out in Step 1.

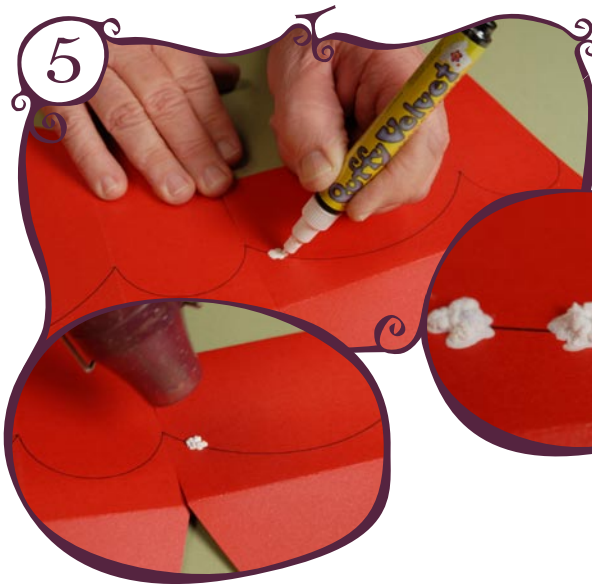


Place the sides marked "A" and "B" next to each other on your work surface so the sides are lined up and touching. Adhere with a piece of regular tape.

On the panel marked 2, fold the side marked "C" down and secure with tape.

Turn the flat box over to the front side. Mark $1\frac{3}{4}$ " up from the bottom fold on the left and right edge of the box front (marked Panel 2 on the back). With the Le Pen Fine Tip Marker in black from Marvy/Uchida draw a swagline for the garland using a saucer (about $4\frac{1}{2}$ " in diameter). The Le Pen is great for detail work like this because of the fine tip, and it dries quickly, so there is no smearing. Make a second garland swagline on the box side (marked Panel 1 on the back). Panels 3 and 4 are left blank.



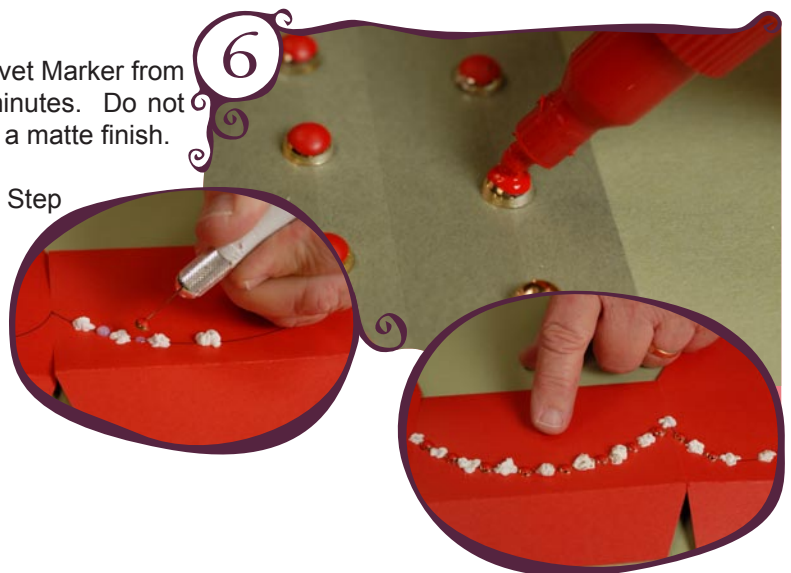


5 Create the popcorn/berry garland. Scribble 3 small puddles of white Puffy Velvet Marker from Marvy/Uchida for each “popped corn” in the garland, using the swagline drawn in Step 4 as a guide. Mike ‘puddled’ these close together and left about $\frac{3}{8}$ ” between each “popped corn”.

Heat with a Marvy/Uchida Heat Tool to “puff” each “popped corn”.

Color about 13 tiny gold cabochons with a red Puffy Velvet Marker from Marvy/Uchida. Let dry—this only takes a couple of minutes. Do not heat this time. The Puffy Velvet marker will dry flat with a matte finish.

Adhere a red “berry” between every “popped corn” from Step 5 with a clear adhesive.



7 Mail Elf Mail Elf Mail Elf Mail

Computer generate “Elf Mail” and print out in red ink on white cardstock. Mike’s letters are about $\frac{3}{4}$ ” tall. Elf Mail fits 4 times across the page, and was printed in ‘landscape’ position.

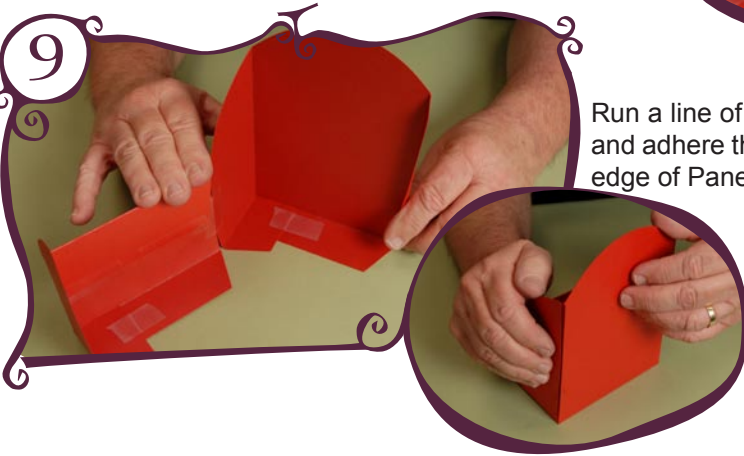
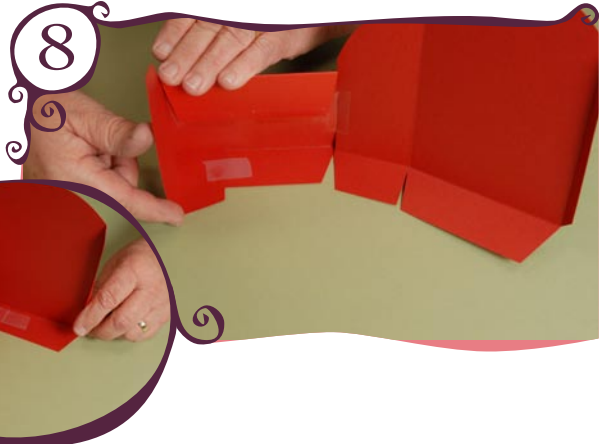
Cut a strip $4\frac{3}{4}$ ” x 1” to fit across the front of the box (marked Panel 2 on the back). Cut a strip $2\frac{3}{8}$ ” x 1” to fit across the side of the box (marked Panel 1 on the back).



To add a little sparkle, use the Gold Just Glitter Marker from Marvy/Uchida to outline each of the letters.

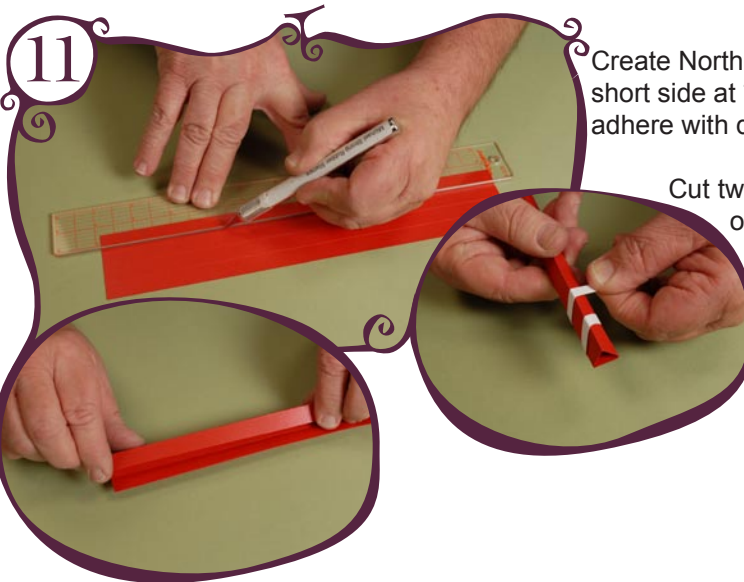
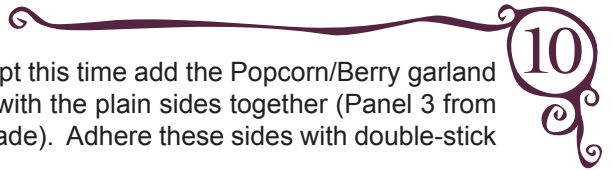
Put the box together. Turn the box over to the backside. Fold on all the scored lines. Fold the bottom flap from Panel 1 up and over onto the bottom flap from Panel 2.

Fold the bottom flap from Panel 4 up and over onto the bottom flap from Panel 3.



Run a line of glue stick along the Glue Tab on Panel 4. Fold the box up and adhere the tab on Panel 4 to the inside edge of Panel 1. Be sure the edge of Panel 1 is even with the fold of Panel 4. Let dry.

Repeat Steps 1 through 8 to create a 2nd box, except this time add the Popcorn/Berry garland to Panels 2 and 3. Place the 2 boxes side by side with the plain sides together (Panel 3 from the first box made and Panel 1 of the second box made). Adhere these sides with double-stick tape.



Create North Pole. Cut a strip of heavy red cardstock 2" x 11". Score the short side at 1/2", 1", and 1 1/2". Fold on the score lines into a triangle and adhere with double-stick tape or adhesive of choice.

Cut two strips of white cardstock 1/4" x 11" each. Start at one end of the triangle pole and wrap the white cardstock strip around the pole at an angle. It will take all of one white strip and part of a 2nd white strip to complete the pole. Secure at both ends with a dot of glue. Trim the edges of the white cardstock at both ends with scissors.

Make an indentation in a 1 ½” round Styrofoam ball. Add a drop of glue and then attach the Styrofoam ball to the top of the striped pole. Adhere the striped pole to the back of the Elf Mailbox where the two boxes meet.

12



Make the Elf Mail sign. Computer generate “Elf Mail” in red on white cardstock. Mike used “Curlz” font in 120 pt. size. Cut sign to 5 ½” x 1 ¾”. Mat on red cardstock leaving about a 1/8” border on all sides. Attach to the striped pole with double-stick tape or adhesive of choice. Fill with all of the holiday cards you receive this year!

MAKE it YOUR OWN!

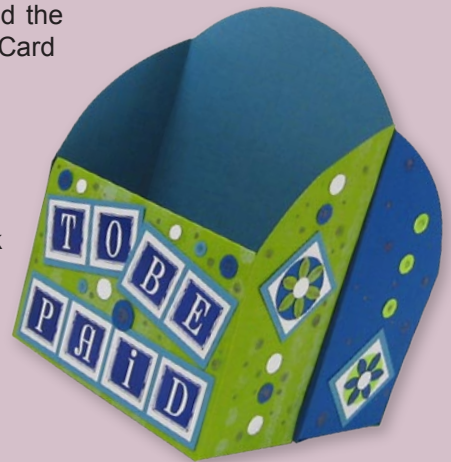


LET IT SNOW

Marvy/Uchida’s Just Glitter Marker in silver is the perfect accent for punched snowflakes and the cool blue tones of this Let It Snow Holiday Card Holder.

PAID IN FULL

Instead of 2 boxes side by side, Mike adhered these back to back. One side is bills “To Be Paid”, the other side is for bills that are “Paid in Full”...or maybe a great place to keep your receipts. Why not brighten up ‘bill-paying-time’? Mike printed the box template out on 2 different colors of cardstock for each box. He used the Just Glitter markers from Marvy/Uchida to add a little pizzazz to this project, which you can mark “PAID IN FULL”.



CONGRATULATIONS

You’ve just completed your Boxing Match, but the fun doesn’t stop there!
Be sure to stop back by The Scrapbook Lounge every week for more exciting new twists on scrapbooking!

MAKE it YOUR OWN!



LET IT SNOW

Marvy/Uchida's Just Glitter Marker in silver is the perfect accent for punched snowflakes and the cool blue tones of this Let It Snow Holiday Card Holder.

PAID IN FULL

Instead of 2 boxes side by side, Mike adhered these back to back. One side is bills "To Be Paid", the other side is for bills that are "Paid in Full"...or maybe a great place to keep your receipts. Why not brighten up 'bill-paying-time'!? Mike printed the box template out on 2 different colors of cardstock for each box. He used the Just Glitter markers from Marvy/Uchida to add a little pizzaz to this project,



CONGRATULATIONS

You've just completed your Boxing Match, but the fun doesn't stop there!
Be sure to stop back by The Scrapbook Lounge every week for more exciting new twists on scrapbooking!