

Design Guide



# Pick a Card, Any Card

THE  
SCRAPBOOK LOUNGE



with Tricia Morris

**TV**  **Weekly.com**

©2008 TVWeekly.com, Inc.

Oh my! Has Tricia run out of ideas? Of course not—a special deck of cards will ensure you've got plenty of ideas for your scrapbook pages. Mix and Match the layouts; change the look by changing paper colors—to borrow a phrase from Michael Strong...the possibilities really are endless.



## MATERIALS

### FEATURED PRODUCTS

#### Club Scrap

- Idea Deck
- Haberdashery Collection
- Body and Soul Collection
- Avant Garde Collection
- 3" x 14" Grid Ruler

#### Tonic Studios

- 12" Large Base Trimmer

### SUPPLIES

- Dry Adhesive of choice

## STARTING YOUR PROJECT

**!** Interesting twist! Because this Design Guide was photographed prior to filming her episode, Tricia didn't know which idea from the Idea Deck would make the show. So, here she highlights the Queen of Clubs, 5 x 7 *Photo Mattes Formula*. For the episode, she used the King of Spades, *Four Eights Formula*.

1



Once you've chosen your Idea Card from the Idea Deck from Club Scrap, decide on the Club Scrap Collection that you're going to use.

For the episode, Tricia chose to use papers from the Haberdashery Collection. For the step-out photos in this Design Guide she chose to use papers from the Body and Soul Collection and the Queen of Clubs from the Club Scrap Idea Deck.

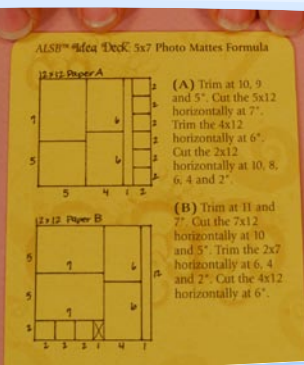
Gather supplies needed for the layout. Look at the Gather List on the front of the Idea Card. As you choose the papers from the Body and Soul Collection from Club Scrap, label each paper with the corresponding letter from the Gather List. This will make it easier when you trim the papers.

2



**Gather List**  
 12x12 Paper A  
 12x12 Paper B  
 8½x11 Paper C  
 (2) 12x12 Paper D (base)

3

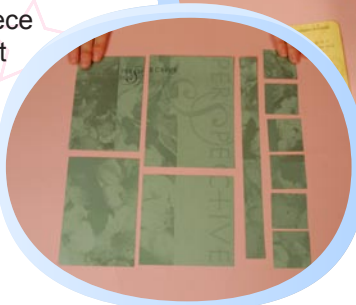


Turn the Idea Card from the Idea Deck over and follow the Cutting Guide to trim each paper. There are both written directions and a diagram to follow.

For this layout, following the Cutting Guide, trim Paper A (Body and Soul Collection, Dark Leaf Print). Place the 12" x 12" sheet on the 12" Large Base Trimmer from Tonic Studios. Trim at 10", 9", and 5".

Cut the 5" x 12" horizontally at 7". Trim the 4" x 12" piece horizontally at 6". Cut the 2" x 12" piece, horizontally at 10", 8", 6", 4", and 2". Set Paper A pieces aside.

4



5



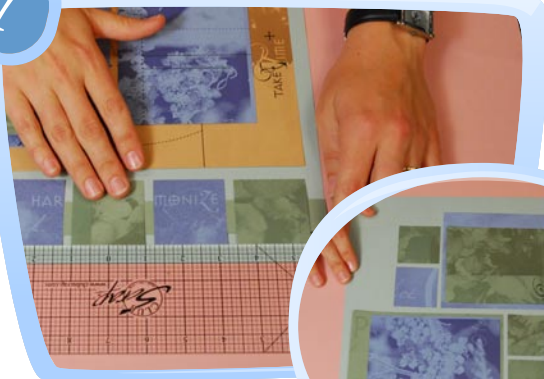
Trim Paper B (Body and Soul Collection, Sky Print) following the Cutting Guide. Place the 12" x 12" sheet in the Tonic Studios Trimmer and trim at 11" and 7". Cut the 7" x 12" piece horizontally at 10" and 5". Trim the 2" x 7" horizontally at 6", 4", and 2". Cut the 4" x 12" horizontally at 6".

The "x" on the diagrams are the pieces that will not be used in this layout—but they're great to incorporate into the embellishments for the page.

Paper C is the 8½" x 11" sheet of Tan Print from the Body and Soul Collection. This piece is used in the layout without being trimmed at all.

6

7



Put the 2-page layout together. Turn the Queen of Clubs Idea Card from the Idea Deck back to the front. Use the diagram provided to put the page together on the Paper D (base papers).

The left side of the layout uses five of the 2" squares cut from Papers A and B. Line up the 3" x 14" Grid Ruler from Club Scrap to align the papers evenly ½" from the bottom of the layout.

This is just the beginning. Once the foundation is finished, add your photos and start embellishing with coordinating cut outs, stickers, and rubber stamps from the Club Scrap Collections. When you've decided on the photos, turn the layout pages to find the orientation that works best with your theme.

### MAKE it YOUR OWN!™

#### ON THE EDGE FORMULA

Tricia used the Haberdashery Collection with the rich jewel-tone colors to create an elegant layout that would be perfect for formal occasion photos or a masculine page. The coordinating cut outs from the Collection make embellishing a snap. Remember you can mix and match Idea Cards from the Idea Deck.



#### 4X6 SPLIT FORMULA

The vibrant colors of the Avant Garde Collection really pop off these pages. Whether you need a single page layout or use both pages for a double-page spread, this Idea Deck is all you need to jump start your creativity. Challenge yourself—how many pages can you complete in one crop with the Idea Deck from Club Scrap?



## CONGRATULATIONS!

You've just completed your Pick a Card, Any Card project, but the fun doesn't stop there! Be sure to stop back by The Scrapbook Lounge every week for more exciting new twists on scrapbooking!

SPONSORED BY

**CLUB SCRAP**  
[www.clubscrap.com](http://www.clubscrap.com)

**IDEA DECK**

**3" X 14" GRID RULER**

**CLUB SCRAP COLLECTIONS**  
Haberdashery, Body and Soul, Avant Garde

**TONIC STUDIOS**  
[www.tonicstudios.com](http://www.tonicstudios.com)  
**12" LARGE BASE TRIMMER**

Still Photos: C.R. Bostick  
Layout: Reneé Michaels

©2008 TVWeekly.com, Inc.

**TVWeekly.com**